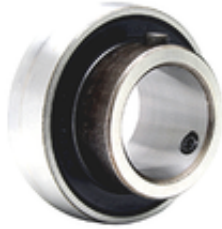
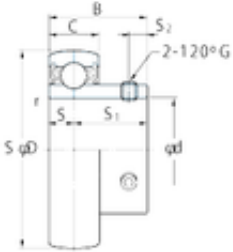




Lamar parts manufacturing company

34,925 mm x 72 mm x 32 mm FYH SB207-22
deep groove ball bearings



Bearing No. SB207-22

Size	34.925x72x32 mm
Bore Diameter	34,925 mm
Outer Diameter	72 mm
Width	32 mm
d	34,925 mm
D	72 mm
B	32 mm
C	17 mm
S1	23,5 mm
r min.	1,1 mm
S	8,5 mm
S2	6 mm
Thread (G) - 1/4-28UNF	1/428UNF
Weight	0,42 Kg
Basic dynamic load rating (C)	25,7 kN
Basic static load rating (C0)	15,4 kN

SB207-22 Bearing 2D drawings and 3D CAD models