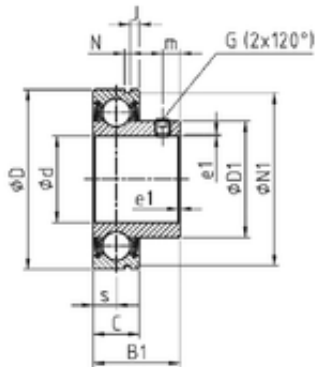




## Lamar parts manufacturing company



30 mm x 62 mm x 30 mm SNR CUS206 deep groove ball bearings

Bearing No. CUS206

Size	30x62x16 mm
Bore Diameter	30 mm
Outer Diameter	62 mm
Width	16 mm
d	30 mm
D	62 mm
B1	30 mm
C	16 mm
e	1 mm
a	3 mm
m	5,5 mm
s	8 mm
D1	40 mm
J	3,18 mm
N	1,9 mm
N1	59,61 mm
Thread (G)	M6 x 1
Weight	0,27 Kg
Basic dynamic load rating (C)	19,5 kN
b	1.9 mm
B	30 mm
G	M6x1
r	1
S	8 mm
SW	3 mm

CUS206 Bearing 2D drawings and 3D CAD models



## Lamar parts manufacturing company

C0	11.2 kN
T min.	-20 ° C
T max.	100 ° C
Recommended tightening torque for set screw	5.5 Nm