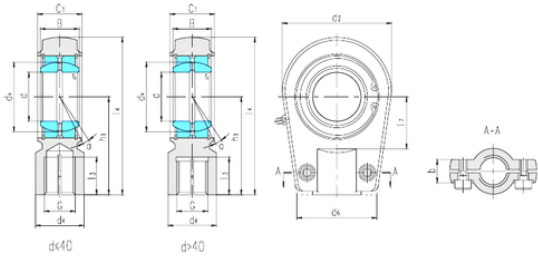




Lamar parts manufacturing company



LS SIR60ES plain bearings

Bearing No. SIR60ES

| | |
|-------------------------------|-----------|
| Bore Diameter | 60 mm |
| d | 60 mm |
| B | 44 mm |
| b | 46 mm |
| d2 | 130 mm |
| d4 | 75 mm |
| d6 | 120 mm |
| dk | 80 mm |
| h1 | 130 mm |
| l3 min. | 59 mm |
| l4 max. | 200 mm |
| l7 min. | 65 mm |
| r min. | 1 mm |
| C1 | 50 mm |
| Thread (G) | M58 × 1,5 |
| Bolt (G) | M16 × 45 |
| Angle | 6 ° |
| Weight | 6,49 Kg |
| Basic dynamic load rating (C) | 245 kN |

SIR60ES Bearing 2D drawings and 3D CAD models