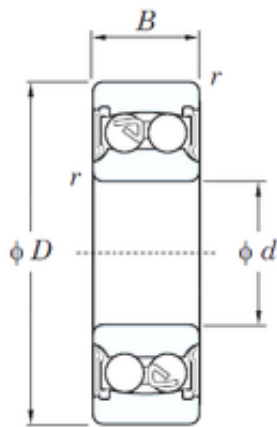




Lamar parts manufacturing company



12 mm x 37 mm x 17 mm KOYO 2301-2RS self aligning ball bearings

Bearing No. 2301-2RS

Size	12x37x17 mm
Bore Diameter	12 mm
Outer Diameter	37 mm
Width	17 mm
d	12 mm
D	37 mm
B	17 mm
C	17 mm
r min.	1 mm
da min.	16.8 mm
da max	16.8 mm
Da max.	31 mm
ra max.	1 mm
Weight	0.095 Kg
Basic dynamic load rating (C)	9.40 kN
Basic static load rating (C0)	2.15 kN
(Grease) Lubrication Speed	12000 r/min
Calculation factor (e)	0.36
Calculation factor (Y0)	1.86
Calculation factor (Y1)	1.77

2301-2RS Bearing 2D drawings and 3D CAD models